



**2023-2024 Grade K  
Windham Academy  
Public Charter School  
Curriculum Presentation**

**“Voted #1 Charter School in New Hampshire!!!”**

## Mission:

The Windham Academy Public Charter School focuses on STEM Prep education incorporating reading and art to provide a well-rounded STREAM educational experience for its learners within a culture that incorporates the excitement of project-based learning, the satisfaction of subject mastery in areas of literacy, numeracy and social studies, and lasting values through civic understanding and personal character.

## Vision:

The Windham Academy Public Charter School excites, inspires, and empowers our children to embrace the wonders of science, technology, reading, engineering, arts, and mathematics.

# About Us:

- \*New Hampshire Charter School Founded In 2017 - Opened in 2018.

- \*Run by our established Charter (found on our website under “About WA”)

- \*Governed by a Board of Trustees mixed with founders, parents, community members

- \*Superintendent/Executive Director: Matthew Castonguay, Master of Arts in Teaching & Learning - Certified in New Hampshire and Massachusetts:

  - \*9 years as a classroom teacher / curriculum coordinator / interim school leader

  - \*9 years as a school leader

- \*Director of Student Services: Sara Amacio - Certified in New Hampshire:

  - \*12 years in Special Education and Behavioral / Social Emotional Learning Supports

- \*Student Services Coordinator /Tiered Instruction Coordinator: Rosemary Coughlan:

  - \*35 years in Speech & Language and Special Education

- \*Classroom Teachers, Special Education Teachers, Master’s School Counselor, Art Teacher, STEM Teacher, PE Teacher, Contracted Music Teacher, Foreign Language Teacher, Interventionists, Enrichment, Paraprofessionals (Teacher Assistants), Full Time RN, Administrative Assistant, Office Secretary

# About Us:

- STREAM Integration into all subject areas
- Min. of four Project-Based Learning Units per grade level each school year
- Focus on individualized learning and small group instruction
- More Hands-On, Tactile Learning, Projects
- Math Tutor for Upper Grade Levels ([tutor.com](https://www.tutor.com))
- Enrichment & Intervention Opportunities for all grade levels
- i-Ready Diagnostic Assessment 3x/year
- 1:1 Chromebooks
- Teacher Classroom Flexibility / Creativity
- Flexible Seating for all students
- Family-Oriented & Whole Child Approach
- High teacher/parent communication (Bloomz, PowerSchool,...\_



## Whole Learner Outcomes

*\*This is centered on attending to the academic, social, emotional, and cognitive needs of all learners.*

### **Agency:**

Learners set goals, initiate action, and persist through challenges by pursuing interests, building on strengths, and working purposefully to develop knowledge, skills, and dispositions critical for a changing world.

### **Collaboration:**

By building empathy, respect, understanding and connection with communities near and far, learners express comfort working with people similar to and different from themselves, can be relied upon, and engage productively with all.

### **Real-world problem solving:**

Respectfully expressing curiosity about the past, present, and future, learners plan, apply skills and knowledge, and reflect often to carry out individual and collective action to solve problems that matter to them and their world.

<b>From School-Centered:</b>	<b>To Learner-Centered:</b>
*Teach to the average and manage expectations.	*Variability is the norm, and the uniqueness of learners is something to build upon.
*Relationships are secondary to learning.	*Relationships are the foundation of effective learning communities.
*Learners are sorted and ranked.	*Everyone is capable of learning and contributing in meaningful ways.
*Success is defined by grades and standardized test scores.	*Success is defined on an individual basis; each learner has their own unique strengths, interests, and goals.
*Focus on the most effective teaching.	*Focus on producing the most effective learning.
*Learners follow a standardized path, place, and pace to assess proficiency.	*Learners move at their pace and follow the path that allows them to demonstrate a mastery of knowledge, skills, and dispositions.
*Learners adapt to the standardized System.	*The system adapts to meet the needs of the learner.
*Learners must be compelled to learn.	*Learners want to learn.
*Education is done to the learner.	*Education is done by (and with) the learner.

**How Does Special  
Education and  
Section 504 Work at a  
Charter School in NH?  
& WA Student Support  
Team**

## After School Clubs/Activities:

- YMCA
- Band (Grades 4+)
- Art Club
- Girls on the Run (Spring - Grades 3+)
- STEM Club
- Coding Club
- Chess Club
- Robotics
- Destination Imagination
- Math Enrichment
- Intramural Sports & Middle School Sports (Grade 5+)



Typical Kindergarten  
Day at  
Windham Academy -  
8:45am-2:45pm:

<b>K</b>		<b>Monday</b>	<b>Tuesday</b>	<b>Wednesday</b>	<b>Thursday</b>	<b>Friday</b>
<b>8:45-9:05</b>		MM	MM	MM	MM	MM
<b>9:05-10:55</b>		Literacy/RTI/SS	Literacy/RTI/SS	Literacy/RTI/SS	Literacy/RTI/SS	Literacy/RTI/SS
<b>10:55-11:45</b>		Recess/Lunch	Recess/Lunch	Recess/Lunch	Recess/Lunch	Recess/Lunch
<b>11:45-12:30</b>		Physical Education	STEM (Mr. R.)	Music	Art	Spanish
<b>12:30-1:15</b>		STEM	STEM	STEM	STEM	STEM
<b>1:15-2:15</b>		Math/RTI	Math/RTI	Math/RTI	Math/RTI	Math/RTI
<b>2:15-2:40</b>		Literacy/RTI/SS	Literacy/RTI/SS	Literacy/RTI/SS	Literacy/RTI/SS	Literacy/RTI/SS
<b>2:40-2:45</b>		Organize/Pack	Organize/Pack	Organize/Pack	Organize/Pack	Organize/Pack

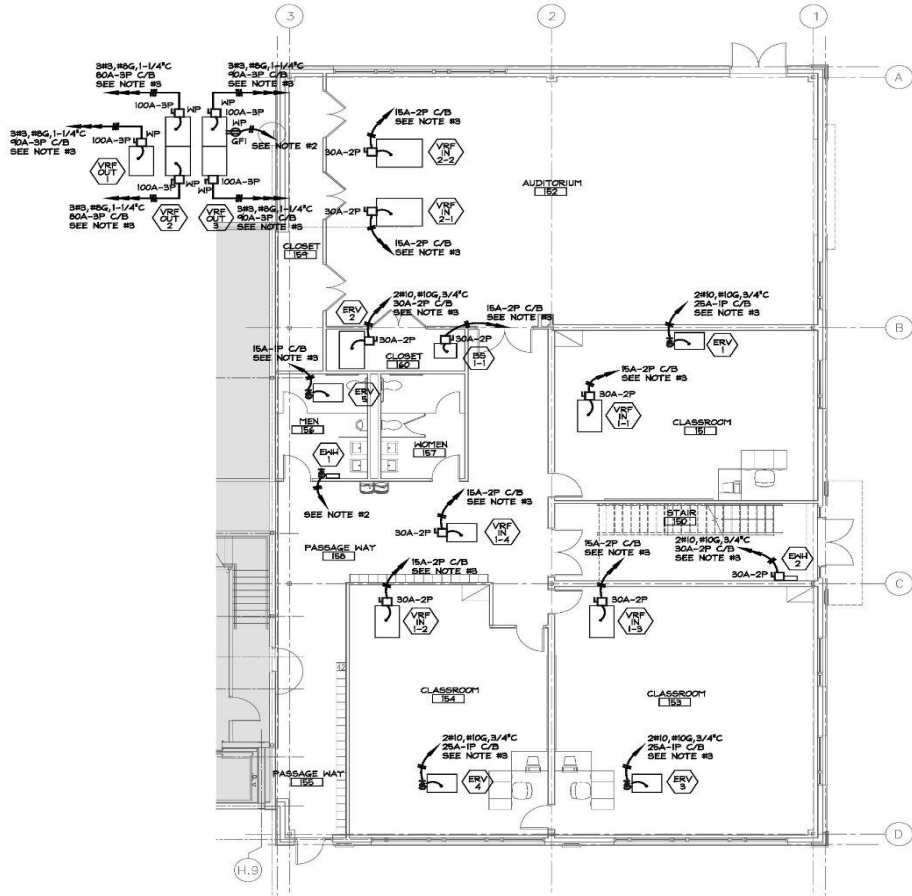
# What is “Play Based” Education?

(UNH)

# Curriculum - STREAM:

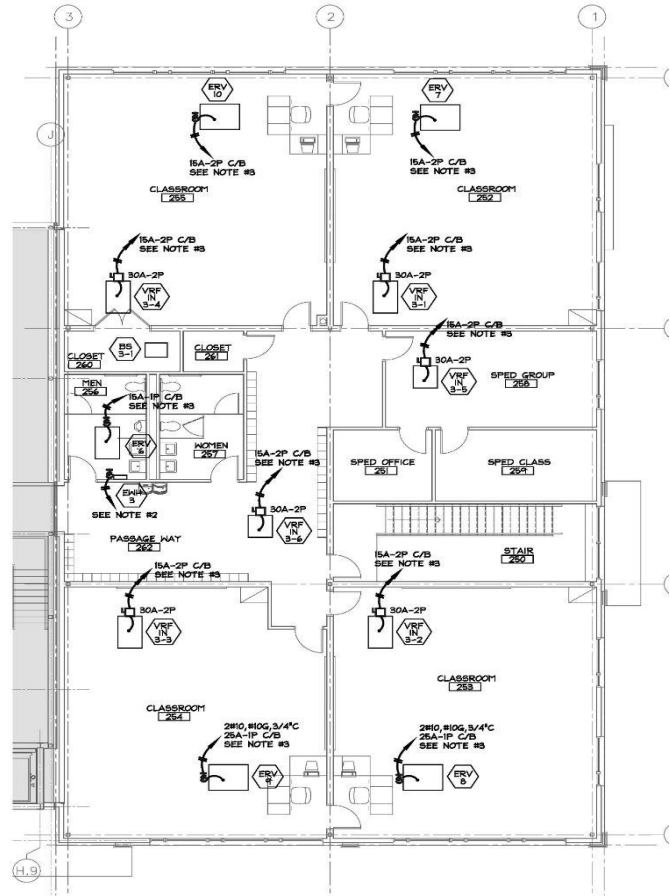
[https://docs.google.com/document/d/1-119F-W9xTmZOHxh\\_LEQc\\_hh4ySkPwpvZEEzQDUj9BA/edit?usp=sharing](https://docs.google.com/document/d/1-119F-W9xTmZOHxh_LEQc_hh4ySkPwpvZEEzQDUj9BA/edit?usp=sharing)

# Expansion Update



FIRST FLOOR PLAN  
SCALE: 1/8" = 1'-0"

ALL VRF-IN UNITS SHALL HAVE CONDENSATE PUMP  
INSTALLED ADJACENT TO VRF-IN UNIT AND WIRED TO  
ASSOCIATED VRF-IN UNIT.



SECOND FLOOR PLAN  
SCALE: 1/8" = 1'-0"

# Be An Active Part of our Community!

1. PTO
2. Fundraising Committee
3. Volunteer
4. Donate
5. Word of Mouth
6. Events
7. Always Opportunities!

Q & A



**Thank you!!!**